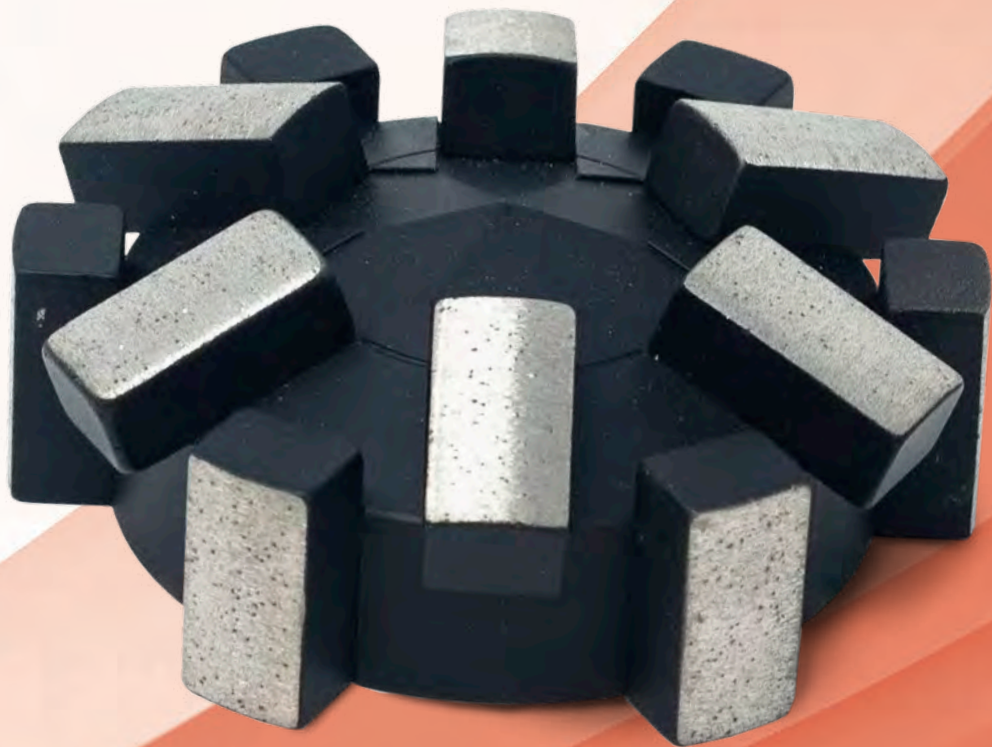


IMS
ROBOTICS



Best **TOOLS**
for **CUTTERS**



■ MADE
■ IN
■ GERMANY

Thread: 5/8"UNC

For your Sewer Rehab Robots:
IMS TURBO 3/MIDI/MINI, WW

EN

THREAD 5/8"UNC

IMS TURBO 3/MIDI/MINI

Milling tools suitable for **CIPP, PVC** and **ROOTS**



Diamond cone milling tool

Field of application: Opening of laterals and inlet lines

Ø mm	Height mm	Segments	IMS-No.	Code-No.
40/20	47	16	015 01 307	21 49 40 051

Kardiam-BLACK-POWERLINE® Not for steel-reinforced concrete!



Diamond cone milling tool - with dia-tip -

Field of application: Opening of laterals and inlet lines

Ø mm	Height mm	Segments	IMS-No.	Code-No.
30/15	44	4 + 2	015 01 616	21 49 40 151

Kardiam-BLACK-POWERLINE® Not for steel-reinforced concrete!



Diamond double-cone milling tool - transparent -

Field of application: Opening of laterals and inlet lines

Ø mm	Height mm	Segments	IMS-No.	Code-No.
45	60	34 - 6 wings	015 01 618	21 49 40 347

Kardiam-BLACK-POWERLINE® Not for steel-reinforced concrete!



Diamond globe milling tool

Field of application: Opening of laterals and inlet lines

Ø mm	Height mm	Segments	IMS-No.	Code-No.
42	45	14	015 01 109	21 49 40 037
42	45	28 double	015 01 308	21 49 40 032

Kardiam-BLACK-POWERLINE® Not for steel-reinforced concrete!



Diamond globe milling tool - transparent -

Field of application: Opening of laterals and inlet lines

Ø mm	Height mm	Segments	IMS-No.	Code-No.
42	45	14 - 4 wings	015 01 619	21 49 40 341

Kardiam-BLACK-POWERLINE® Not for steel-reinforced concrete!

Milling tools suitable for **CIPP, PVC** and **ROOTS**



Diamond globe milling tool - transparent -
Field of application: Opening of laterals and inlet lines

Ø mm	Height mm	Segments	IMS-No.	Code-No.
50	57	30 - 6 wings	015 01 620	21 49 40 350

Kardiam-BLACK-POWERLINE® Not for steel-reinforced concrete!



Diamond globe milling tool - with chip run-off grooves, smooth running cut -
Field of application: Opening of laterals and inlet lines

Ø mm	Height mm	Segments	IMS-No.	Code-No.
50	57	36	015 01 621	21 49 40 182

Kardiam-BLACK-POWERLINE® Not for steel-reinforced concrete!



Diamond globe milling tool - transparent -
Field of application: Opening of laterals and inlet lines

Ø mm	Height mm	Segments	IMS-No.	Code-No.
56	40	33 - 6 wings	015 01 171	21 49 40 138

Kardiam-BLACK-POWERLINE® Not for steel-reinforced concrete!



Diamond globe milling tool - asymmetrical segments -
Field of application: Opening of laterals and inlet lines

Ø mm	Height mm	Segments	IMS-No.	Code-No.
50	54	asymmetrical	015 01 304	21 49 40 511
70	79	asymmetrical	015 01 622	21 49 40 512

Kardiam-BLACK-POWERLINE® Not for steel-reinforced concrete!



Diamond cone-cylinder milling tool - with carbide-tip, asymmetrical segments -
Field of application: Opening of laterals and inlet lines

Ø mm	Height mm	Segments	IMS-No.	Code-No.
50	55	asymmetrical +1	015 01 623	21 49 40 584
70	64	asymmetrical +1	015 01 468	21 49 40 585

Kardiam-BLACK-POWERLINE® Not for steel-reinforced concrete!

THREAD 5/8"UNC

IMS TURBO 3/MIDI/MINI

Milling tools suitable for **CIPP, PVC** and **ROOTS**



Diamond cone-cylinder milling tool

Field of application: Opening of laterals and inlet lines, removes deposits

Ø mm	Height mm	Segments	IMS-No.	Code-No.
42	33	22	015 01 624	21 49 40 240

Kardiam-BLACK-POWERLINE® Not for steel-reinforced concrete!



Diamond cylinder milling tool

Field of application: Opening of laterals and inlet lines, removes deposits

Ø mm	Height mm	Segments	IMS-No.	Code-No.
45	30	20	015 01 306	21 49 40 018

Kardiam-BLACK-POWERLINE® Not for steel-reinforced concrete!



Diamond inflow pipe milling tool

Field of application: Opening of laterals and inlet lines, removes deposits

Ø mm	Height mm	Segments	IMS-No.	Code-No.
58	31	28	015 01 625	21 49 40 243

Kardiam-BLACK-POWERLINE® Not for steel-reinforced concrete!



Diamond plate milling tool

Field of application: Opening of laterals and inlet lines, removes deposits

Ø mm	Height mm	Segments	IMS-No.	Code-No.
63	27	24	015 01 108	21 49 40 065

Kardiam-BLACK-POWERLINE® Not for steel-reinforced concrete!



Carbide granulate globe milling tool

Field of application: Opening of laterals and inlet lines, removes deposits

Ø mm	Height mm	Grain size	IMS-No.	Art.-Nr.
55	50	2,5/3,0	015 01 110	21 45 00 064

THREAD 5/8"UNC IMS TURBO 3/MIDI/MINI

Milling tools suitable for **CONCRETE, VITRIFIED CLAY** and **DEPOSITS**



Diamond globe milling tool

Field of application: Preparatory milling of laterals,
Removal of intruding laterals and deposits

Ø mm	Height mm	Segments	IMS-No.	Code-No.
48	47	21	015 01 107	21 49 70 059



Diamond globe milling tool

Field of application: Preparatory milling of laterals,
Removal of intruding laterals and deposits

Ø mm	Height mm	Segments	IMS-No.	Code-No.
60	64	16	015 01 106	21 49 70 051



Diamond inflow pipe milling tool

Field of application: Preparatory milling of laterals,
Removal of intruding laterals and deposits

Ø mm	Height mm	Segments	IMS-No.	Code-No.
53	30	8 DN100	015 01 105	21 49 60 062
75	30	8 DN200	015 01 302	21 49 60 061
85	33	12 DN250	015 01 104	21 49 60 060



Diamond halfglobe milling tool

Field of application: Preparatory milling of laterals,
Removal of intruding laterals and deposits

Ø mm	Height mm	Segments	IMS-No.	Code-No.
65	30	10	015 01 300	21 49 60 029

THREAD 5/8"UNC

IMS TURBO 3/MIDI/MINI

Milling tools suitable for **CONCRETE, VITRIFIED CLAY** and **DEPOSITS**



Diamond cone milling tool

Field of application: Preparatory milling of laterals, removal of intruding laterals and deposits

Ø mm	Height mm	Segments	IMS-No.	Code-No.
38/28	52	6	015 01 626	21 49 60 075
55/45	40	9	015 01 301	21 49 00 068



Diamond plate milling tool

Field of application: Preparatory milling of laterals, removal of intruding laterals and deposits

Ø mm	Height mm	Segments	IMS-No.	Code-No.
80	30	21 DN200/300	015 01 627	21 49 60 078



Diamond mushroom shaped milling tool - elastic/spring loaded -

Field of application: Preparatory milling of laterals, removal of intruding laterals and deposits

Ø mm	Height mm	Segments	IMS-No.	Code-No.
80	38	12 DN200	015 01 120	21 49 70 078
120	50	12 DN300	015 01 122	21 49 70 021



Diamond mushroom shaped milling tool - elastic/spring loaded -

Field of application: Preparatory milling of laterals, removal of intruding laterals and deposits

Ø mm	Height mm	Segments	IMS-No.	Code-No.
98	38	18 DN200	015 01 121	21 49 70 027
135	50	18 DN300	015 01 123	21 49 70 031

ACCESSORIES - THREAD 5/8"UNC



Corundum grindstone

Field of application: Grinding of metal and cast iron pipes, removal of intruding obstacles

Ø mm	Borehole / Thread	Height mm	IMS-No.	Code-No.
40	5/8"UNC	55	015 01 628	21 50 00 124
40	12	30	015 01 160	21 50 00 113
80	5/8"UNC	30	015 01 156	21 50 00 107
80	22,2	27	015 01 154	21 50 00 102
90/110	5/8"UNC	57	015 01 157	21 50 00 105
90/110	22,2	53	015 01 155	21 50 00 101



Multifunctional key for changing the screw connection

(Corundum grindstone Ø 80 + Ø 90/110):

Total length mm	SW	Pins	IMS-No.	Code-No.
160	24	2	015 01 158	21 50 00 111



Diamond cutting disc

Field of application: Cutting of inliners, GRP, PE,...

Ø mm	Borehole / Thread	Height mm	IMS-No.	Code-No.
50	5/8"UNC	42	015 01 629	21 49 60 131
50	6,0	2	015 01 167	21 28 27 112
75	6,0	2	015 01 631	21 28 27 113
115	5/8"UNC	47	015 01 630	21 49 60 132
115	22,2	2	015 01 632	21 28 27 110
125	22,2	2	015 01 633	21 28 27 111



Grinding wheel holder thread 5/8 "UNC to ø22,2

Ø mm	Length mm	IMS-No.	Code-No.
45	45	015 01 063	21 50 00 248



Brushes

Field of application: Post-processing of inliner openings, removal of residual film, Cleaning, roughening work, ...

Brushes	Ø mm	Height mm	IMS-No.	Code-No.
Cup Brush	65	50	015 01 024	21 50 00 211
Cup Brush	80	70	015 01 111	21 50 00 210
Cup Brush	100	65	015 01 035	21 50 00 237



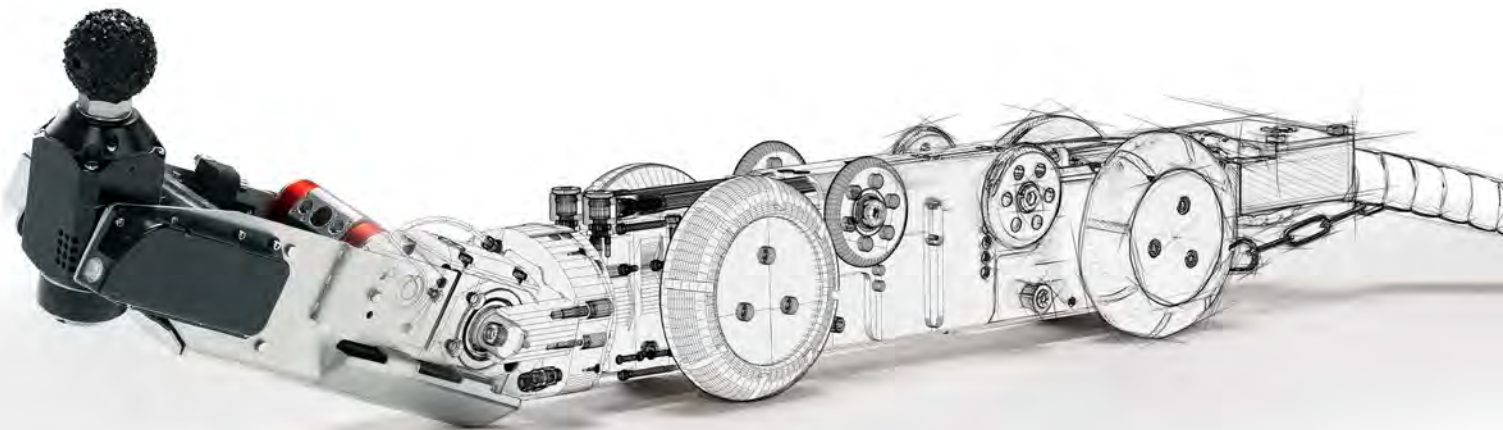
Extensions

Ø mm	Length mm	IMS-No.	Code-No.
24	33	015 01 009	21 50 01 019

IMS ROBOTICS

info@ims-robotics.de

ims-robotics.de



in cooperation with



Best **TOOLS** for **CUTTERS**

KARDIAM Diamantwerkzeuge GmbH
Claude-Dornier-Straße 17
D-88239 Wangen
GERMANY

Phone: +49 (0)7520-9515-0
Fax: +49 (0)7520-9515-29
info@kardiam.de
www.kardiam.de